

## CORNWALL SEA FISHERIES DISTRICT

### MINIMUM FISH SIZES (CM)

Bass	37.5
Black Seabream	23
Blue Ling	70
Brill	30
Cod	35
Conger Eel	58
Dab	15
Flounder	25
Grey Mullet	20
Haddock	30
Hake	30
Herring	20
Horse Mackerel	15
Lemon Sole	25
Ling	63
Mackerel	20
Megrim	25
Plaice	27
Pollack	30
Red Mullet	15
Red Seabream	25
Saithe (Coley)	35
Sardine (Pilchard)	11
Sole (Dover)	24
Turbot	30
Whiting	27
Witch Flounder	28

Fish to be measured from the tip of the nose to the furthest end of the tail.

### MINIMUM SHELLFISH SIZES (MM)

(See measuring methods overleaf)

Edible Crab - Male	160
- Female	150
Spider Crab - Male	130
- Female	120
Velvet Crab	65
Lobster (Carapace)	90
Crawfish (Carapace)	110
Scallop	100
Queen Scallop	40
Whelk	45
Razor Clam	100
Surf Clam	25

**Note:** There are numerous species (mainly bi-valve molluscs) for which minimum sizes exist that are not listed here.

### Shellfish Measuring Gauge

A stainless steel gauge can be supplied to any fisherman holding a valid CSFC shellfish permit.

### The CSFC District

The sea within the six mile limit drawn from baselines (including Eddystone Rocks), with seaward boundaries at Marsland Mouth in the north and Rame Head in the south.

### Shellfish Permit

An annually renewable permit is required for any person fishing from a boat and removing more than two animals from the species of lobster, crawfish, edible or spider crab.

### Nets

A variety of mesh sizes are regulated for fixed and towed nets, depending on the species being targeted.

For gill and other specified nets it is prohibited to use a mesh size between 71mm and 89 mm.

The use of fixed nets with a headline set less than 3 metres from the surface is banned in numerous areas around the coast.

Any net less than 250 mm is banned from two defined areas around the Manacles and Runnelstone.

### Lobsters/Crawfish

It is prohibited to remove berried lobsters and crawfish.

V-notched lobsters and crawfish must be returned, plus any with a tail flap which is missing or mutilated, such that a v-notch could not be observed.

### Shellfish Boats

Fishing for shellfish (including scallops) with a vessel exceeding 16.46 metres overall length is prohibited, unless special permission has been granted by Cornwall Sea Fisheries Committee (CSFC).

### Trawling

Fishing with a trawl/towed net with a vessel exceeding 18.28 metres overall length or 221 kW engine power is prohibited, unless special permission has been granted by CSFC.

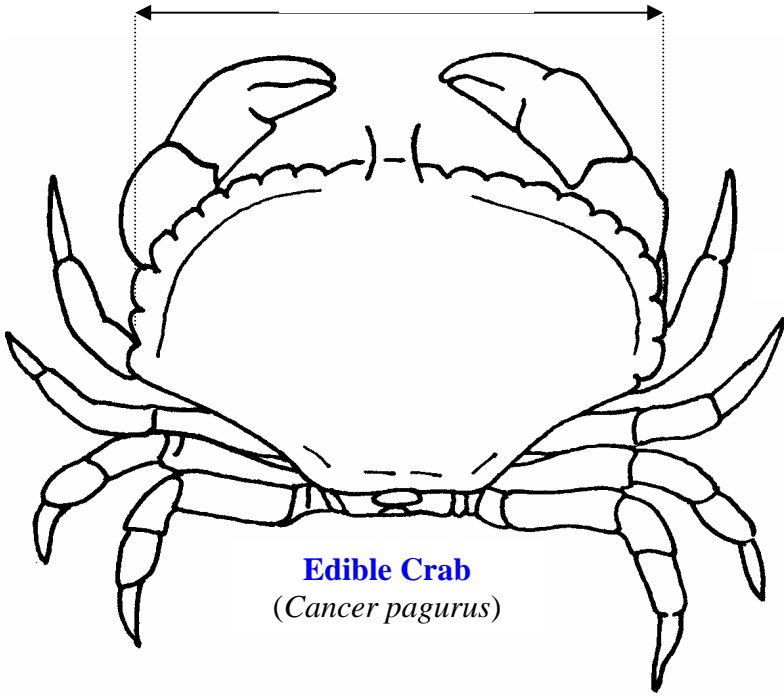
Only a few fisheries regulations are referred to on this card. Further information and advice may be obtained from Cornwall Sea Fisheries, Old Bonded Warehouse, Quay Street, Penzance TR18 4BD, or telephone 01736 369817, or visit our website [www.cornwall.gov.uk/seafisheries](http://www.cornwall.gov.uk/seafisheries).

Information on this card was correct at the time of publication and is intended for guidance only. It is not a statement of the Law which is subject to change. [Issue 2. Jun 2008]

**CORNWALL SEA FISHERIES DISTRICT**

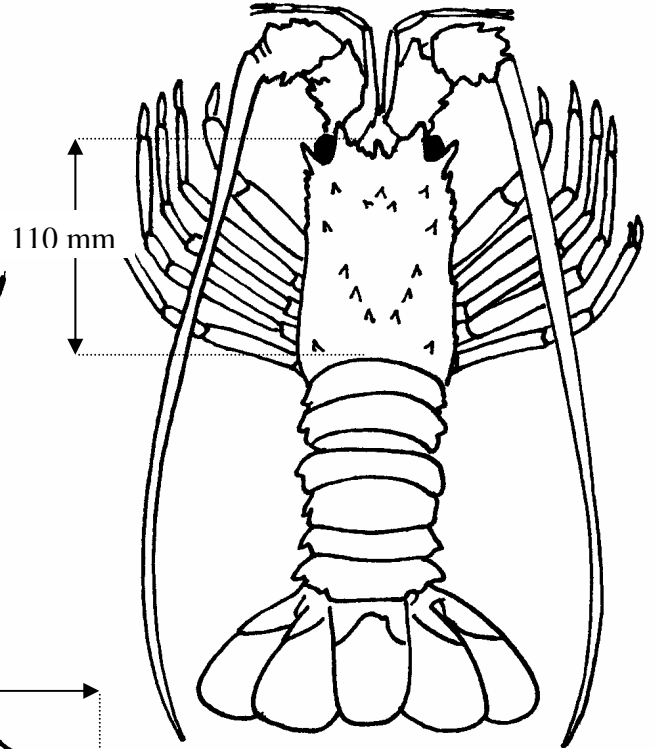
**MINIMUM SIZES**

Male 160 mm  
Female 150 mm



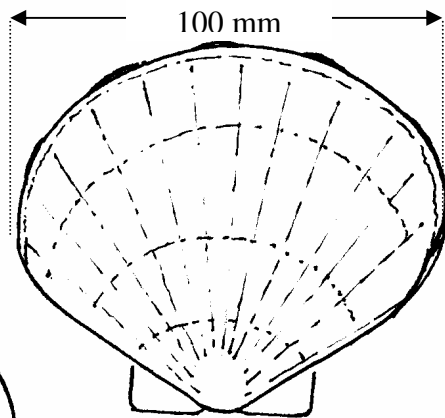
**Edible Crab**  
(*Cancer pagurus*)

**Crawfish**  
(*Palinurus elephas*)



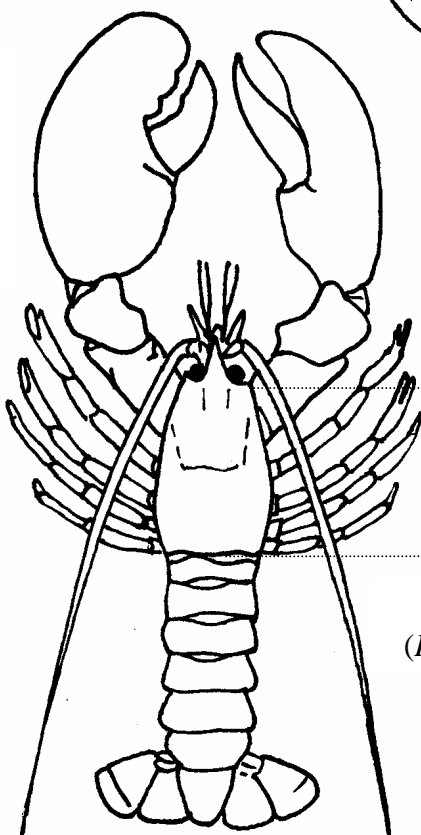
110 mm

**Scallop**  
(*Pecten maximus*)



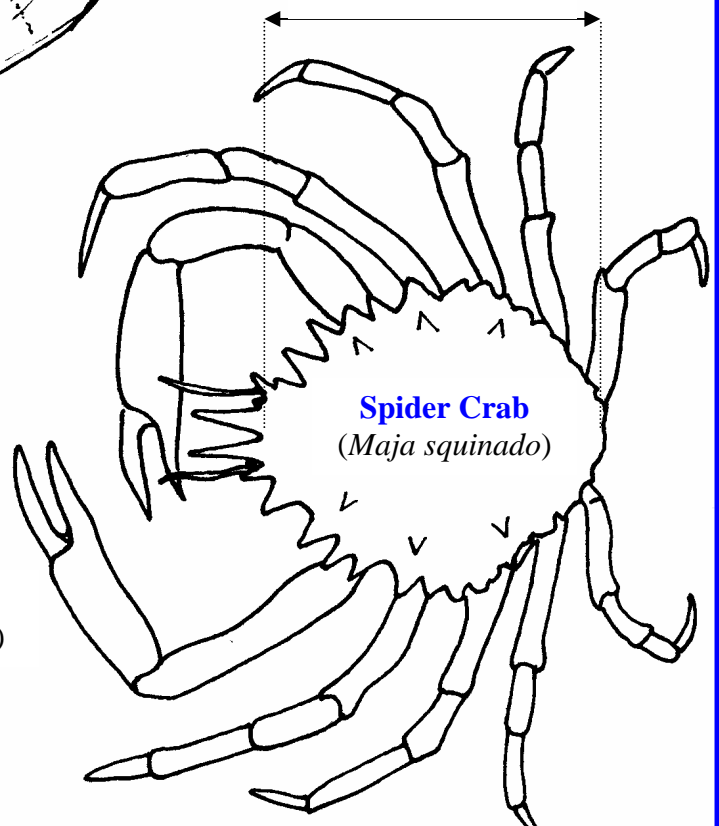
100 mm

Male 130 mm  
Female 120 mm



90 mm

**Lobster**  
(*Homarus gammarus*)



**Spider Crab**  
(*Maja squinado*)